

PRODUCT SPECIFICATIONS

HYDRAULIC BYPASS FILTRATION



ALH-09

Filter Efficiency: Beta (β) 4=10649
Filter Element Dimension: \varnothing 78 x 90
Filter Surface: 221 cm²
Material Filter Housing: Anodized Aluminum
Max. Oper. Press. (Flow Control Valve): 210 bar
Min. Oper. Press. (Flow Control Valve): 10 bar / 145 psi
Max. Temperature: 100°C / 212°F
Maximum Viscosity: 180 cSt
Part Number: 01-ALH-09

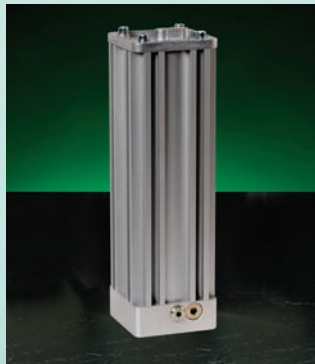
Indicator (Option): Pressure Gauge
Connection Pressure Side: 1/4 BSP inw
Diameter Return Hose: 12 mm
Seals: NBR
Bypass Setting: 4.5 bar / 65.25 psi
Nominal Flow: 1.0 liter / min.
Monitor Connections: 1/8 BSP>M16x2
Weight: 2.2kg / 4.85 lbs.
Dimensions in mm: 90x120x120
Sump Volume: 500 liters
Element Parts: #02-F-09 and #02-F-09B (h.v.)*



ALH-19

Filter Efficiency: Beta (β) 4=10649
Filter Element Dimension: \varnothing 78 x 180
Filter Surface: 442 cm²
Material Filter Housing: Anodized Aluminum
Max. Oper. Press. (Flow Control Valve): 210 bar
Min. Oper. Press. (Flow Control Valve): 10 bar / 145 psi
Max. Temperature: 100°C / 212°F
Maximum Viscosity: 180 cSt
Part Number: 01-ALH-19

Indicator (Option): Pressure Gauge
Connection Pressure Side: 1/4 BSP inw
Diameter Return Hose: 12 mm
Seals: NBR
Bypass Setting: 4.5 bar / 65.25 psi
Nominal Flow: 1.0 liter / min.
Monitor Connections: 1/8 BSP>M16x2
Weight: 3.4kg / 7.49 lbs.
Dimensions in mm: 180x120x120
Sump Volume: 1000 liters
Element Parts: #02-F-19 and #02-F-19B (h.v.)*



ALH-29

Filter Efficiency: Beta (β) 4=10649
Filter Element Dimension: \varnothing 78 x 300
Filter Surface: 735 cm²
Material Filter Housing: Anodized Aluminum
Max. Oper. Press. (Flow Control Valve): 210 bar
Min. Oper. Press. (Flow Control Valve): 10 bar / 145 psi
Max. Temperature: 100°C / 212°F
Maximum Viscosity: 180 cSt
Part Number: 01-ALH-29

Indicator (Option): Pressure Gauge
Connection Pressure Side: 1/4 BSP inw
Diameter Return Hose: 12 mm
Seals: NBR
Bypass Setting: 4.5 bar / 65.25 psi
Nominal Flow: 2.1 liter / min.
Monitor Connections: 1/8 BSP>M16x2
Weight: 4.6kg / 10.14 lbs.
Dimensions in mm: 380x120x120
Sump Volume: 1500 liters
Element Parts: #02-F-29 and #02-F-29B (h.v.)*



ALH-58

Filter Efficiency: Beta (β) 4=10649
Filter Element Dimension: \varnothing 78 x 600
Filter Surface: 1470 cm²
Material Filter Housing: Anodized Aluminum
Max. Oper. Press. (Flow Control Valve): 210 bar
Min. Oper. Press.: 10 bar / 145psi
Max. Temperature: 100°C / 212°F
Maximum Viscosity: 180 cSt
Part Number: 01-ALH-58

Indicator (Option): Pressure Gauge
Connection Pressure Side: 1/4 BSP inw
Diameter Return Hose: 12 mm
Seals: NBR
Bypass Setting: 4.5 bar / 65.25 psi
Nominal Flow: 4.2 liter / min.
Monitor Connections: 1/8 BSP>M16x2
Weight: 7.3kg / 16.09 lbs.
Dimensions in mm: 780x120x120
Sump Volume: 3000 liters
Element Parts: #02-F-58 and #02-F-58B (h.v.)*

*high viscosity

EP NTZ Micro Filtration, LLC

The smart choice.

2424 John Daly
Inkster, Michigan 48141 USA
1.313.792.1740
1.866.PUR OIL 1
www.epntz-filter.com